

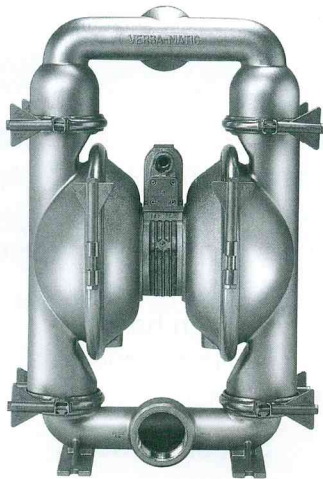
# 3" Food Processing Pump

Stainless Steel Air Section Available

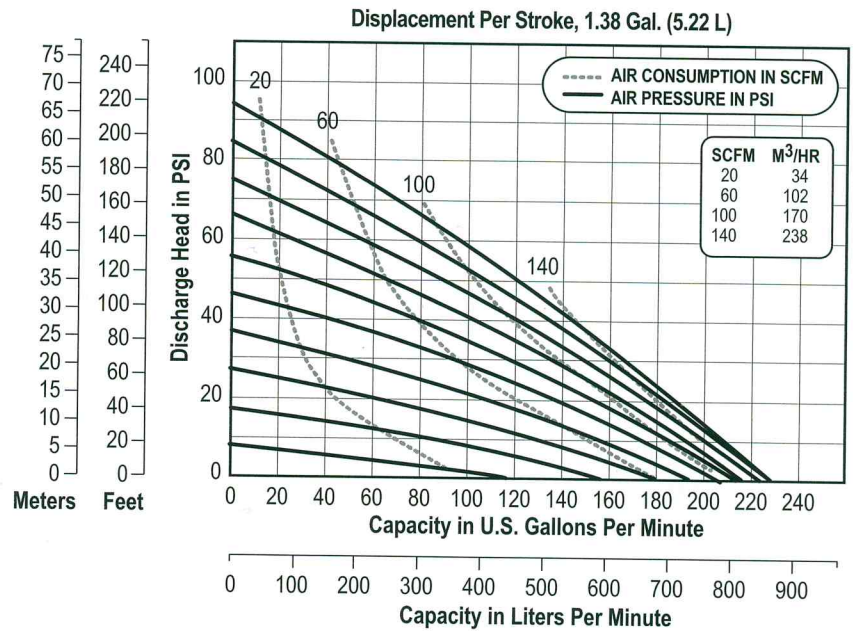
**E3**

## Specifications

Flow Rate adjustable to	0-260 gpm (984 lpm)
Port Size	
Inlet and Discharge	3.0" Tri-Clamp®
Air Inlet	0.5" NPT
Air Exhaust	1.0" NPT
Suction Lift	20' Dry/25' Wet (6.10m/7.62m)
PTFE	10' Dry/20' Wet (3.05m/6.10m)
Max. Particle Size (Diam.)	0.375"(9.52mm)
Shipping Weights	
316 Stainless Steel	210 lbs (95.25 kg)



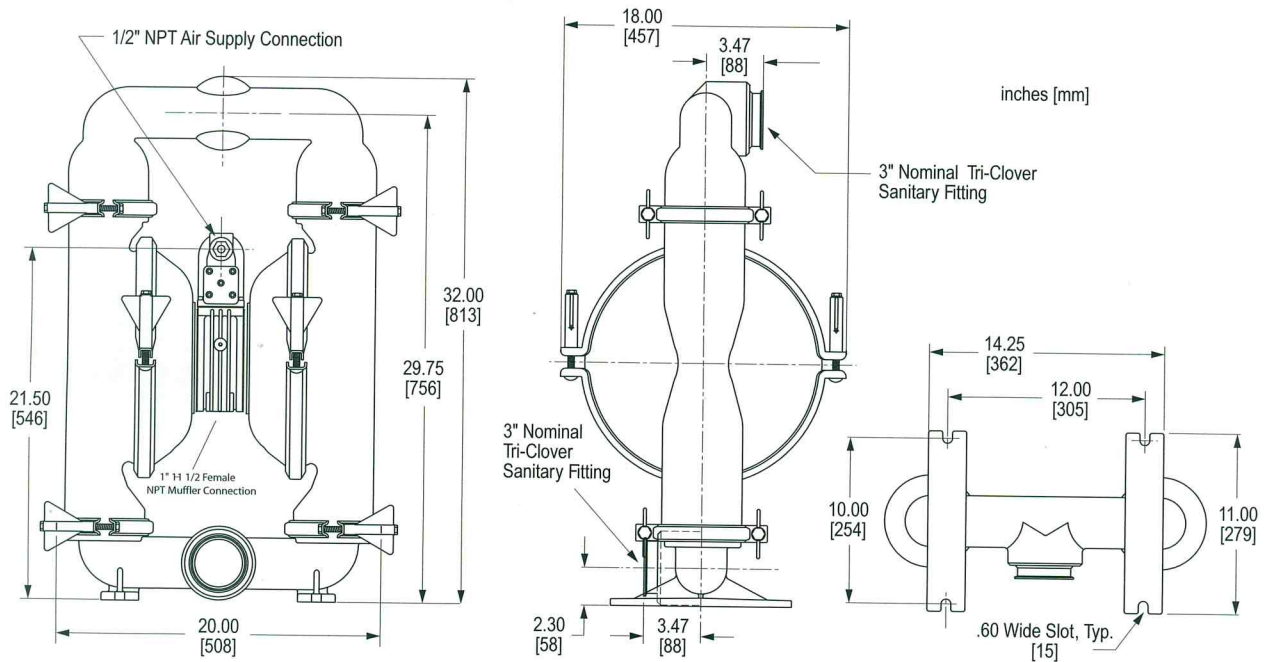
## Performance



**NOTES:** For E3 pumps fitted with PTFE diaphragms, reduce water discharge figures by 20%. Suction lift is reduced to 10' (3.05m) dry and 20' (6.10m) wet.

**CAUTION:** Do not exceed 125 psig (8.5 bars) air supply or liquid pressure.

## Dimensions



Consult factory for certified drawings.