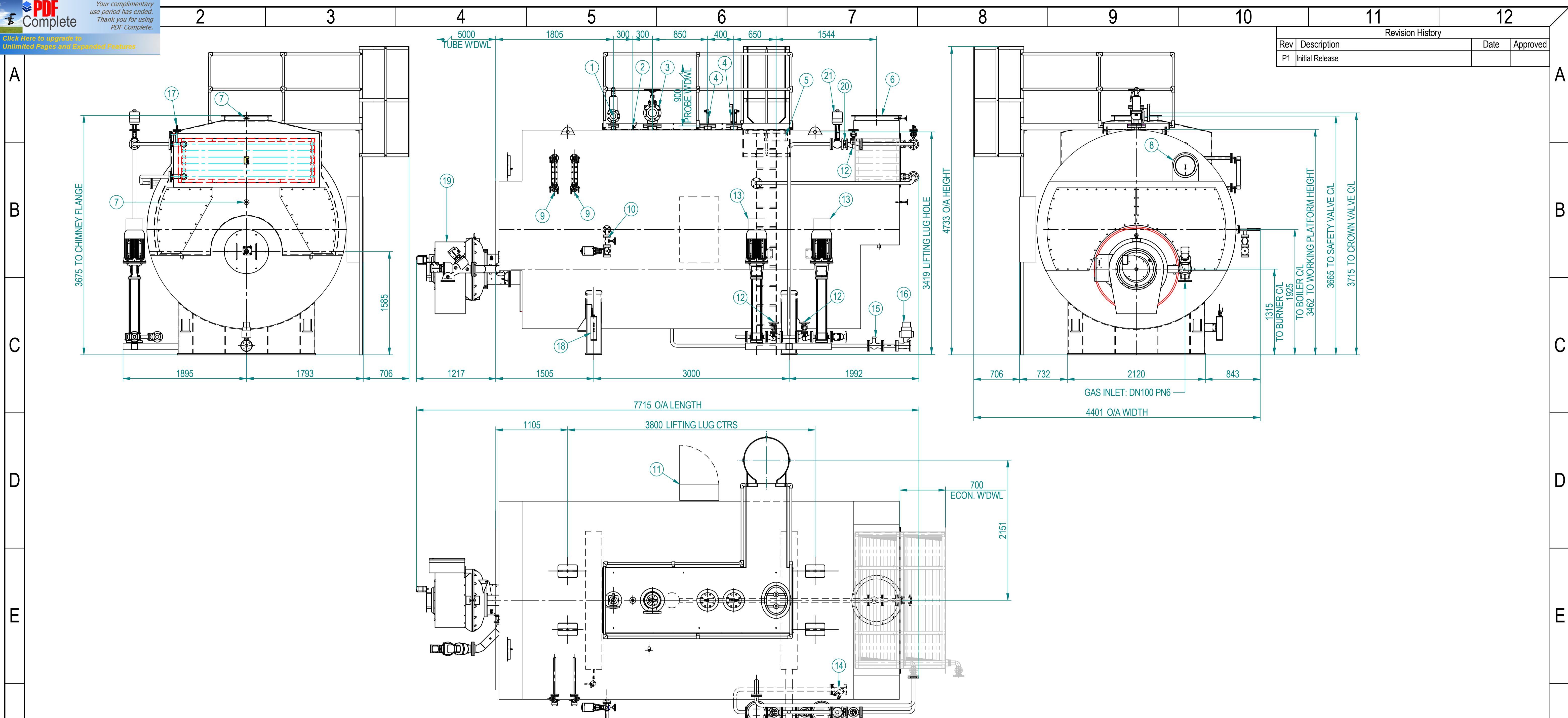


Revision History			
Rev	Description	Date	Approved
P1	Initial Release		



TECHNICAL DATA - YSZ10000-27			
Rated Output F&A 100°C	10000 kg/hr	Working Pressure	14.47 bar gauge
Gas Consumption at MCR	652.4 m³/hr	Design Pressure	19.8 bar gauge
		Hydrostatic Test Pressure	29.7 bar gauge
Steam Space Volume	3.946 m³	Shipping Weight	27480 kg
Steam Release Area	10.77 m²	Weight to NWL	43420 kg
Total Heating Surface	241.4 m²	Flooded Weight	47366 kg
Electrical Supply	400 VAC 50Hz, TP+N, 80A	Control Voltage	230 VAC

ITEM	TITLE	QUANTITY	ITEM	TITLE	QUANTITY
1	DN50 PN40 ARI Fig 35.912 Safety Valve set at 15.9 bar. DN80 PN16 customer connection	1	12	DN50 PN40 SDNR Straight Through Globe Valve (PUMP & ECON. ISO VALVES)	3
2	1" Globe Valve (Boiler Air Vent) - FIG32S PN32	1	13	Pump - Lowara 15SV17F150T - 15.0kW c/w HYDROVAR HV4-15	2
3	Crown Valve. Angle Pattern - Screw Down Non-Return. DN125 PN40 customer connection	1	14	DN50 PN16 "Y" Type Strainer	2
4	Level Controls	1	15	50mm Manual Blowdown Valve with removable lever FB04 PN40	1
5	Manhole	1	16	Auto Blowdown Valve. DN50 PN40 customer connection	1
6	Flue outlet. 766 O.D. x 656 I.D. FLANGE WITH 12 No Ø18 HOLES ON 726 P.C.D. - MATING FLANGE SUPPLIED.	1	17	1" Globe Valve (Econ Air Vent) - FIG32S PN32	1
7	Flue gas thermometer 0 - 400°C	2	18	Sample Cooler	1
8	10" Pressure Gauge 0-400 psi - Redline @ 287 psi / Blue line @ 210 psi	1	19	Dunphy Burner - TG530 modulating natural gas press. jet burner	1
9	Gauge Glasses L/H & R/H - B6 REFLEX TYPE (457mm CTRS)	1 PAIR	20	DN50 PN40 RK86 Wafer check valve. 700 mbar spring, Viton seat	1
10	BCS3 Auto TDS System.	1	21	DN50 PN25 KE73H Mod. Feed Water Valve	1
11	Control Panel	1			

NOTE 1:  
 SAFETY VALVE PIPEWORK TO BE AT LEAST ONE DIAMETER LARGER THAN OUTLET SIZE, WITH NO MORE THAN 1 x 90° BEND, WITH A PIPE RUN UP TO 3m IN LENGTH - IN ALL OTHER CASES PLEASE CONTACT BYWORTH.

DRAWN	NAME	DATE	<b>BYWORTH</b> Boilers
CHECKED	robert	12/05/2011	
ENG APPR			TITLE
MGR APPR			YSZ10000-27 - DB2398-11
UNLESS OTHERWISE SPECIFIED DIMENSIONS ARE IN MILLIMETERS (IN BRACKET IF APPLICABLE)			SIZE
Copyright © Byworth Boilers Ltd All rights reserved.			A1
This document is the property of Byworth Boilers Limited and may not be copied or disseminated to a third party or used for any purpose other than that for which it is supplied without the express written authority of Byworth Boilers Limited.			DWG NO
			YSZ10000-27 - DB2398-11
			REV
			P1
SCALE 1:30			WEIGHT
			SHEET 1 OF 1