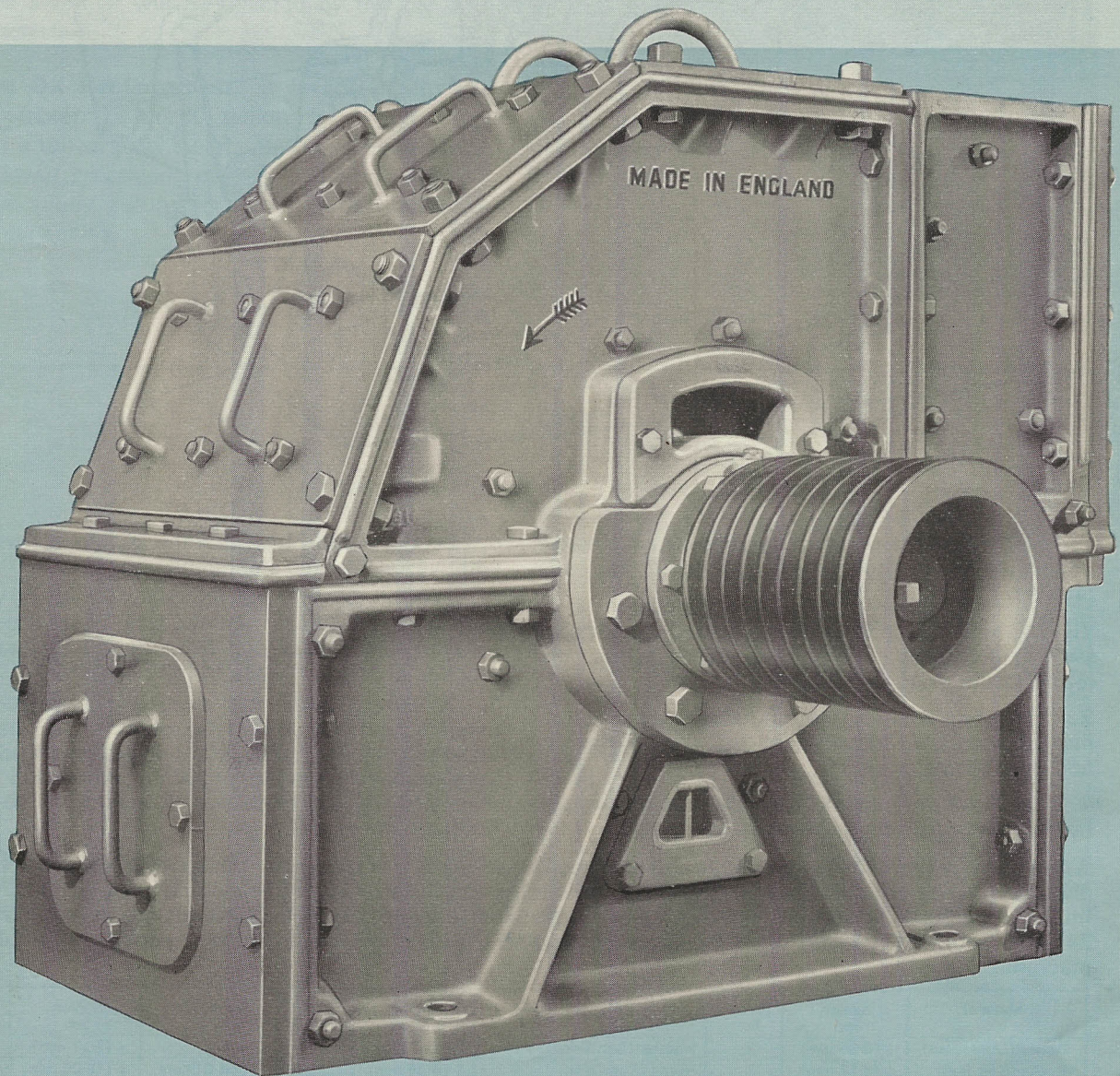


LIST No. 506N

christy

Pulverizer

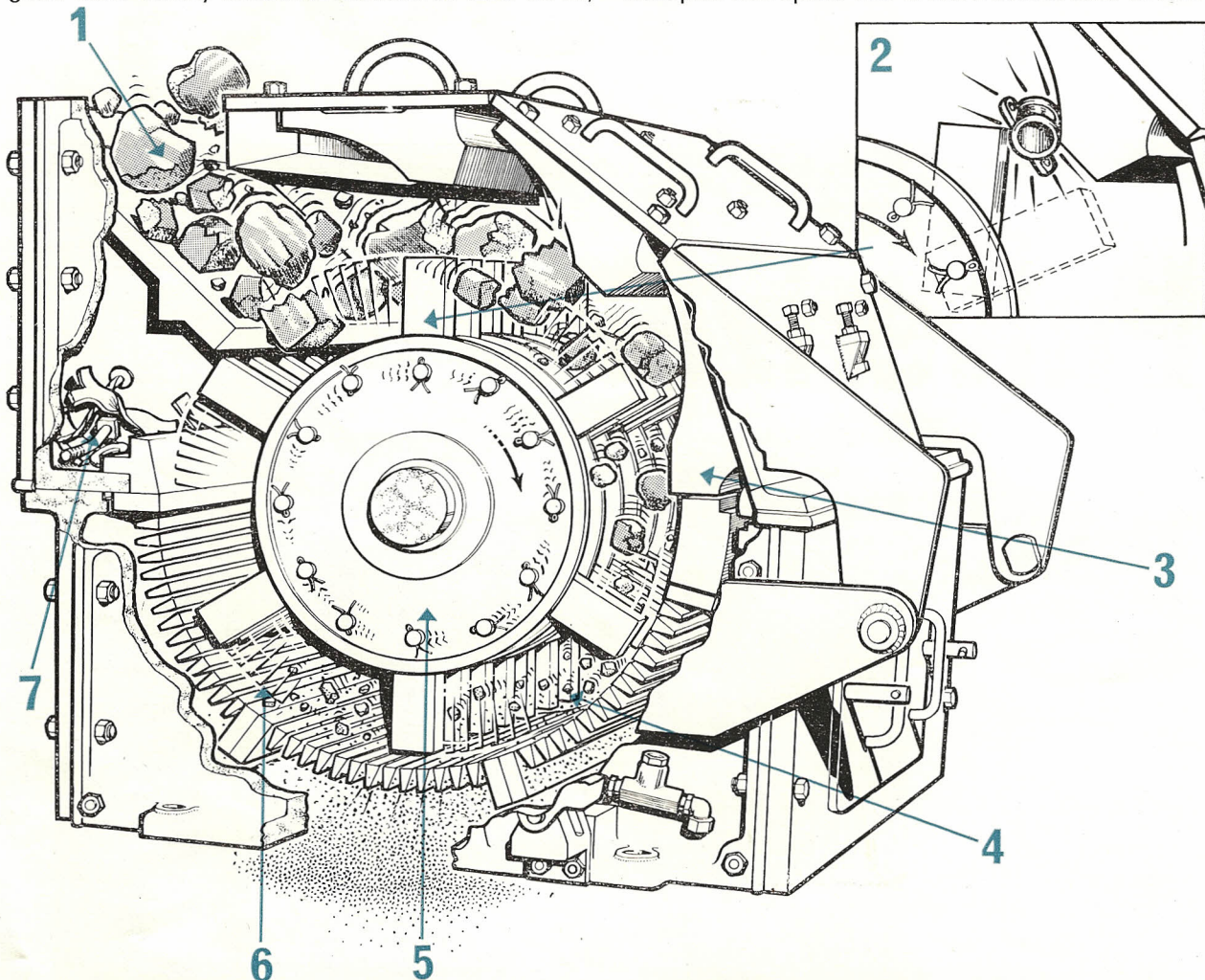


HIGH SPEED GRINDING · SAFE RUNNING · GRINDING AND SCREENING IN ONE OPERATION

A 'SHATTERING' PERFORMANCE

In the diverse fields of industry today there are so many different materials needing to be pulverized that it might seem impossible to design one single machine capable of coping with them all . . . yet that is what we have achieved. THE C & N PULVERIZER — of which there are hundreds in service — will grind such widely different materials as steel swarf,

limestone and timber off-cuts; in fact, we can provide a machine to reduce almost any material to the size required. The extremely rugged construction of the C & N PULVERIZER guarantees it a long life with minimum maintenance. Compared with most other machines of its type it is easier to install, occupies less space and is more economical to run.



1. Feeding at the periphery minimises air pressure under the mill, thus greatly reducing the dust problem.

2. The heavy-section, specially hardened alloy steel swinging beaters 'ride' heavy shock loads, and return to the grinding position.

3. The Shell is lined throughout with cast-iron, or manganese steel, according to the size of machine and duty required.

4. See how the material has been reduced in size by the shattering blows of the beaters.

5. Sectional rotor to which the beaters are secured with Nickel Chrome steel transverse pins.

6. Semi-circle of interchangeable screens which determine maximum particle size of product are inserted through the top front doors, and slide in grooves cast in the sides of the machine.

7. A 'Tramp' metal trap enables heavy pieces of metal to be thrown out of the grinding chamber thus avoiding damage to beaters and screens and contamination of finished product. When fed automatically the machine can be safely left to work unattended.

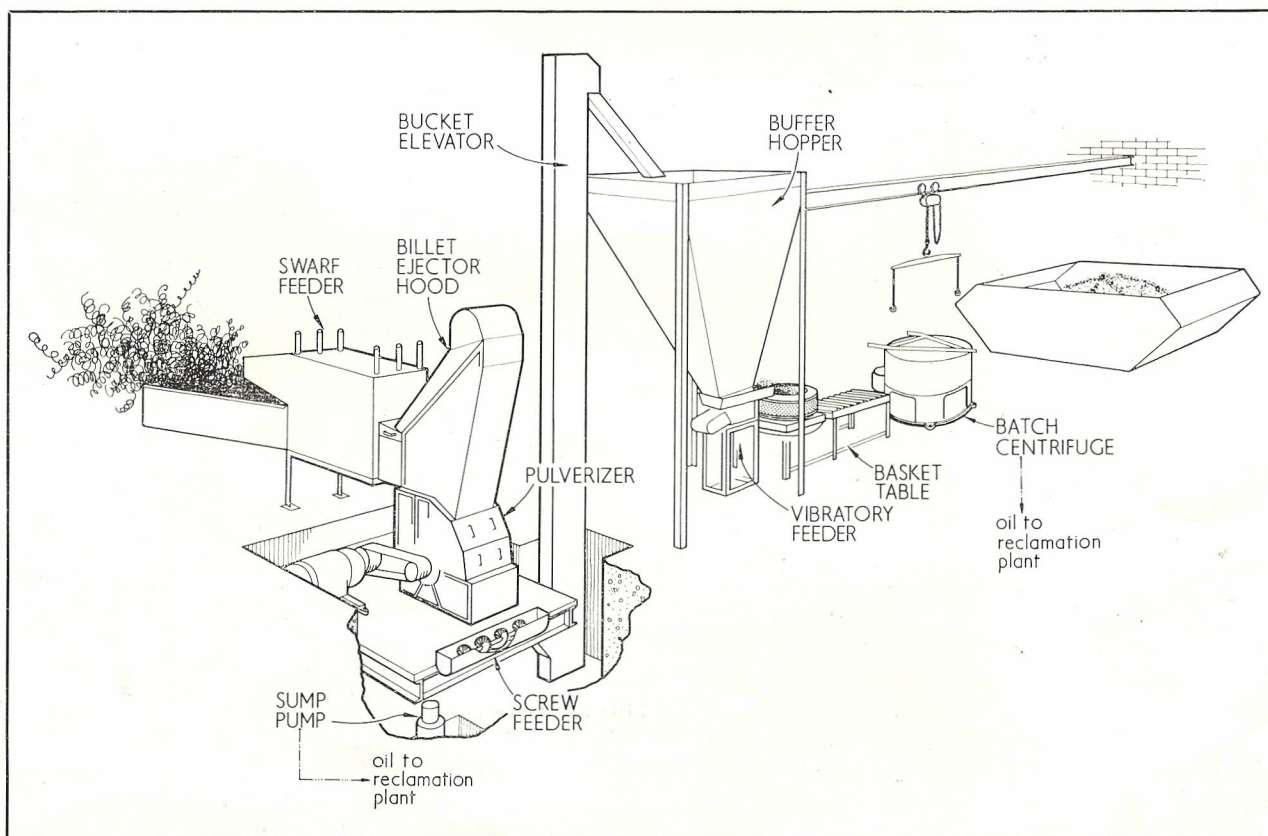
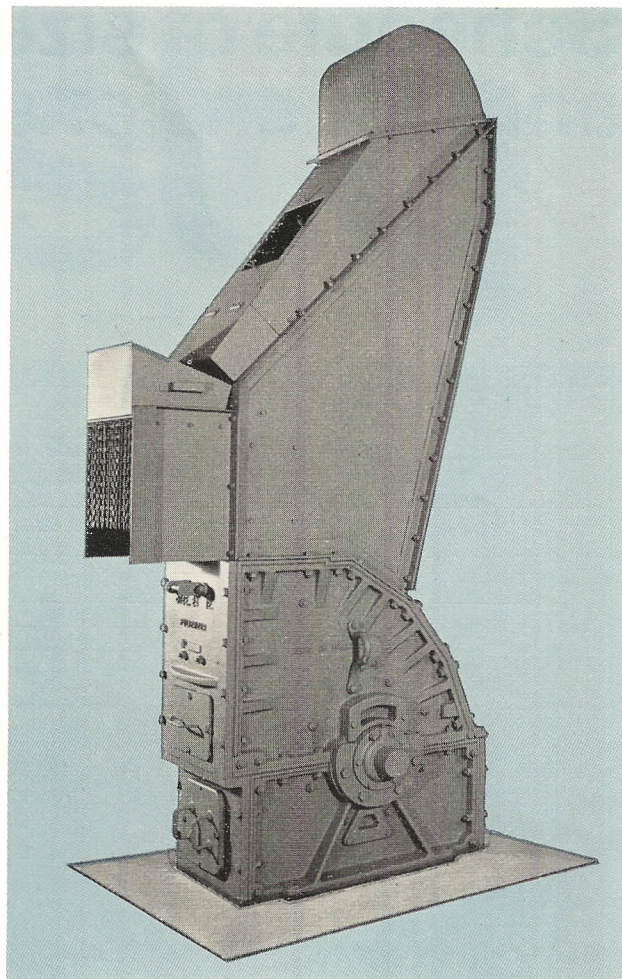
A wide variety of materials can be ground or pulverized in the C & N pulverizer. The following brief schedule gives some idea of the range and capacities. It is based on the size 24 × 12 machine using 40 h.p., and is fitted with screens as shown. The size 18 × 12 machine (the smallest manufactured) has about 3/5th, the 24 × 16 about 1½, and the 24 × 24 about twice, and the 30 × 30 about 3¾ the capacity of the 24 × 12 machine.

Material	Screen ins.	Tons/hr.	Material	Screen ins.	Tons/hr.	Material	Screen ins.	Tons/hr.
Bones (Degreased)	¼ (6.35 mm)	2	Hooves (Sun Dried)	¾ (4.75 mm)	½	Salt	½ (3.17 mm)	5
Bricks (Soft Red)	½ (3.17 mm)	3	Horns (Sun Dried)	¼ (6.35 mm)	¼	Wood Offcuts	¾ (19.05 mm)	1½
Chalk (Dried)	⅜ (3.17 mm)	8-9	Limestone	⅞ (1.6 mm)	3-3½	Swarf Aluminium	¼ (6.35 mm)	1½
Cork (Virgin)	⅝ (15.87 mm)	1	Limestone	½ (3.17 mm)	5-6	Swarf Brass	¼ (6.35 mm)	1
Fluorspar	⅞ (1.6 mm)	4	Magnesite	⅞ (1.6 mm)	5	Swarf Steel	1 (25.4 mm)	1
Gypsum	½ (3.17 mm)	3-4	Meat & Bones (Degreased)	½ (3.17 mm)	2-2½			

Pulverized steel Swarf can be worth an extra £3 a ton

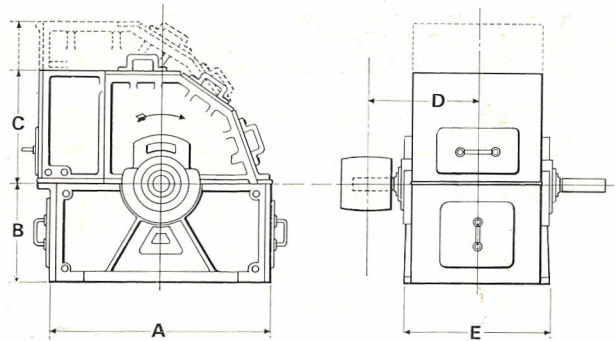
We supply complete swarf pulverizing plants with mechanical handling and oil reclamation equipment tailored to suit any factory layout and designed to handle outputs ranging from 2 tons to 25 tons per working shift. Even a daily output of 2 tons will amount to an extra £2,000 per year on the sale of the pulverized swarf. The unique bar and ejection system (photograph right) is a standard fitting on all C & N swarf pulverizers. If the operator by mistake feeds an occasional bar end into the machine with the swarf, it will be rejected by the bar end ejection system.

Cutting Oil Reclamation. It is possible to reclaim between 20 to 60 gallons of neat cutting oil from a ton of steel swarf. Below is illustrated a typical swarf processing plant operating on a batch principle. Fully automatic plants are available for higher capacities.



A typical swarf crushing and oil reclamation plant as supplied by Christy & Norris Ltd.

Schedule of sizes and dimensions



	H.P.	R.P.M.		A	B	C		D*	E	Approx. Net Weight Tons	Size of Inlet	Size of Discharge Opening
						Standard	High Top					
18B12	15/25	3000 to 3500	Ins.	28½	12½	16⅝	22⅝	17⅝	24	1	14¼ × 5⅝	25½ × 16
			Cms.	72.3	31.7	41.6	56.3	43.2	61		36.2 × 13	64.8 × 40.6
24B12	20/40		Ins.	38	17	19½	28	19⅝	25½	1½	14¾ × 5¾	34 × 14¾
			Cms.	96.5	43.2	49.5	71.1	48.2	64.8		37.5 × 14.6	86.4 × 37.5
24B16	30/60	2000 to 2500	Ins.	38	17	19½	28	23	29½	1¾	18¾ × 5¾	34 × 18¾
			Cms.	96.5	43.2	49.5	71.1	58.4	74.9		47.6 × 14.6	86.4 × 47.6
24B24	45/80		Ins.	38	17	19½	28	27½	37½	2	26¾ × 5¾	34 × 26¾
			Cms.	96.5	43.2	49.5	71.1	68.6	95.3		68 × 14.6	86.4 × 67.9
30B30	120/150	1500 to 2000	Ins.	53	20	27	—	31½	41½	3¼	29 × 10½	44 × 33½
			Cms.	134.6	50.8	68.6	—	78.7	105.4		73.7 × 26.7	111.8 × 85.1

More Christy products:

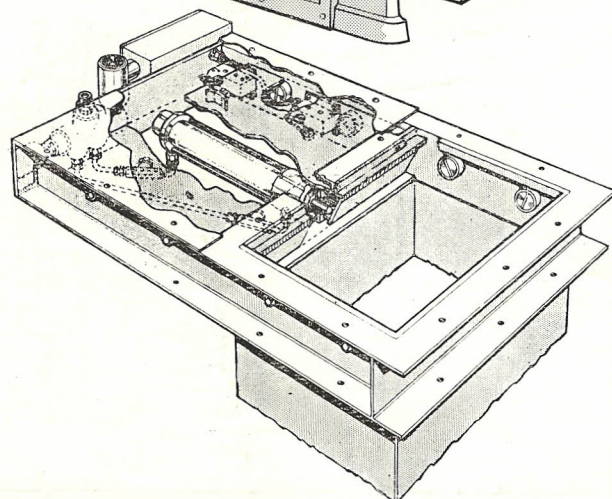
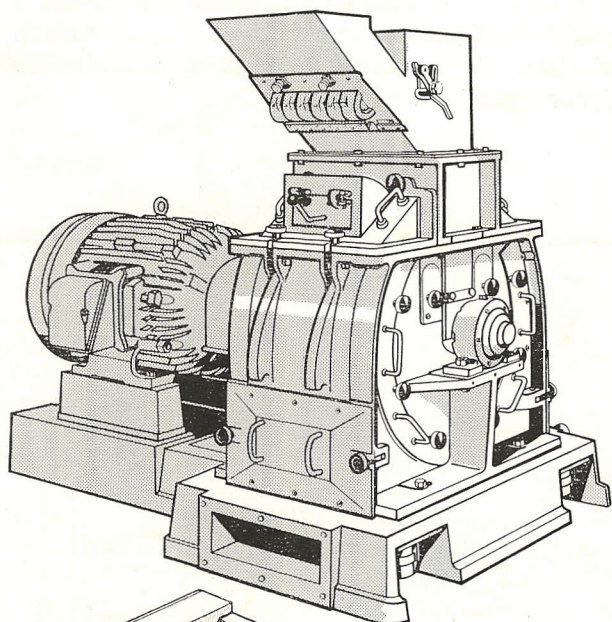
X Mill

The answer to your particular grinding problem may be the C & N X.15 or X.26 Dual Rotation Hammer Mills.

The many new design features increase operating efficiency and substantially reduce time for maintenance.

Installation is simplified by the built-in anti-vibrators, which do not require bolting to foundations.

We will be pleased to send you further details on request.



Speedigate

A MODERN labour-saving plant calls for the latest and most efficient mechanical handling systems. Now, in addition to the manufacture of size reduction machines, we also specialise in mechanical handling systems and we invite you to write for details of our SPEEDIGATE Electro-Pneumatic Slide.

christy

CHRISTY & NORRIS LIMITED
Chelmsford England

Telephone: Chelmsford 64077 · Telegrams: Engineering Chelmsford · Telex: 99266