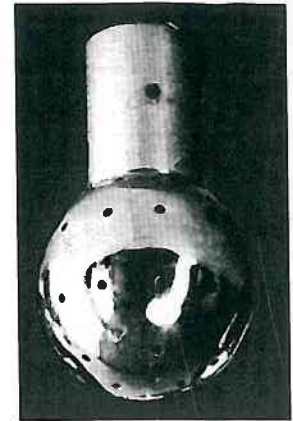


BALL TYPE A

Optimum discharge pressure at sprayhead		Flowrate	Effective cleaning radius		Inlet tube dia.	Ball dia.	Hole dia.	Coverage
lbs/in ²	bar		Ft	Mtrs				
20	1.38	800	3	0.91	¾" I/D	1½"	1/16"	360°

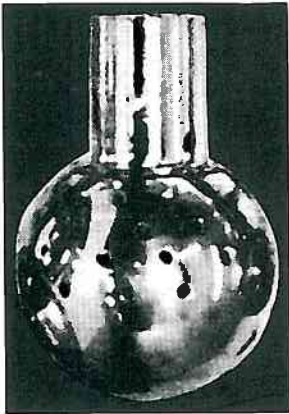
Suitable for use in vessels not exceeding 5'0" diameter.



BALL TYPE B1, B2 and B3

	Optimum discharge pressure at sprayhead		Flowrate	Effective cleaning radius		Inlet tube dia.	Ball dia.	Hole dia.	Coverage
	lbs/in ²	bar		Ft	Mtrs				
B1	20	1.38	1440	5	1.52	1" I/D	2½"	1/16"	Upper 180° only
B2	20	1.38	2495	6	1.82	1" I/D	2½"	3/32"	Upper 180° only
B3	20	1.38	4260	6	1.82	1" I/D	2½"	1/8"	Upper 180° only

Suitable for removing light deposits from upper surfaces of vessel.



BALL TYPE C1 and C2

	Optimum discharge pressure at sprayhead		Flowrate	Effective cleaning radius		Inlet tube dia.	Ball dia.	Hole dia.	Coverage
	lbs/in ²	bar		Ft	Mtrs				
C1	20	1.38	2040	5	1.52	1" I/D	2½"	1/16"	360°
C2	20	1.38	3420	6	1.82	1" I/D	2½"	3/32"	360°

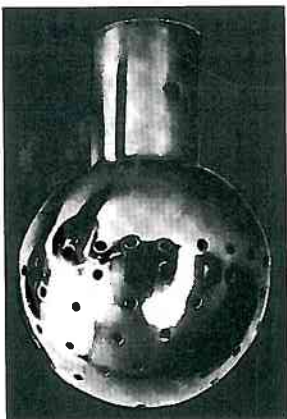
Suitable for removing heavy deposits (cream, yeast etc.) from all internal surfaces.



BALL TYPE D

	Optimum discharge pressure at sprayhead		Flowrate	Effective cleaning radius		Inlet tube dia.	Ball dia.	Hole dia.	Coverage
	lbs/in ²	bar		Ft	Mtrs				
*	*	*	*	*	*	1" I/D	2½"	1/16" 3/32" 1/8"	Lower 180° only

* Suitable for cleaning open top vessels.
Flowrate, hole diameters and discharge pressures can be varied to suit vessel.
Assume radial throw of 5'0" (1.52 mtrs).



BALL TYPE E1 and E2

	Optimum discharge pressure at sprayhead		Flowrate	Effective cleaning distance	Inlet tube dia.	Ball dia.	Hole dia.	Coverage
	lbs/in ²	GPH						
E1	14-500	3000-6000	12' vertically 25' horizontally	1½" I/D	3½"	3/32"	Directional bias	
E2	20-45	3600-6000		1½" I/D	3½"	3/32" plus slots	Directional bias	

This ball has 1/8" dia split pin fixing the orientation of which is important.
Ball E1 = suitable for cleaning vertical vessels via lower dummy manway.
Ball E2 = suitable for cleaning long horizontal vessels.

