



Premium Machinery



Readily Available



Reduced Lead Times



Rigal Bennett

Suppliers Of New & Used Process Machinery

PRODUCT CATALOGUE

No. 164

Featured Items



1,660L S/S Jktd Kek Plough Shear Mixer
Stock Ref; [ND-13927-10](#)



New 1,492mm S/S Twin Deck Sieve
Stock Ref; [RBGS602-63](#)



30kw M/S Christy Turner Hammer Mill
Stock Ref; [ND-13770-11](#)



2,000L S/S Combination Mixer
Stock Ref; [ND-13523-03](#)

Visit Our Website
www.rigal-bennett.com



info@rigal-bennett.com



+44 (0)1977 661 095



Agitators



45kw Dispersion Mixer
Stock Ref; [N9577-03](#)



Drum/ IBC Stirrer 1.5kw
Stock Ref; [ND-12685-03](#)



11kw Shearhead Mixer
Stock Ref; [ND-13553-03](#)



1,200L Zenelli Combination Trifoil Sawtooth Mixer
Stock Ref; [ND-14156-03](#)



4kw S/S Moritz Inline Shear Mixer
Stock Ref; [N10085-03](#)



24kw Sawtooth Dispersion Mixer
Stock Ref; [ND-13430-03](#)

Boilers & Heaters



96kw Electric Oil Heater
Stock Ref; [BHS-12778-22](#)



16kw Compact Oil Heater
Stock Ref; [ND-13350-22](#)



9kw Shini Oil Heater
Stock Ref; [ND-13553-03](#)

Centrifuges



Alfa Laval Lab Centrifuge Model 404 SGP-31G
Stock Ref; [ND-14156-03](#)



Hiller S/S Decanter Centrifuge
Stock Ref; [ND-14128-17](#)



Alfa Laval 30kw Disc Centrifuge
Stock Ref; [ND-12828-17](#)





Compactors



Alexanderwerk Compactor
Stock Ref; N9902-49



Orbital Pellet Press
Stock Ref; N10282-49



1kw Pelletiser
Stock Ref; S8838-59

Complete Process Plants



Rondo Doge LaminaZione Sheeter
Stock Ref; ND-13361-24



BeCoMac Mobile High Speed Blender
Stock Ref; CPL-13974-70



1L Bottle Filling Line - 60 to 110 BPM
Stock Ref; ND-13559-23

Conveyors



S/S U Section Conveyor 400mm Dia
Stock Ref; ND-14009-39



M/S U Section Conveyor 380mm Dia
Stock Ref; ND-13959-39



S/S U Section Conveyor 300mm Dia
Stock Ref; N9500-39



Astell M/S Auger Conveyor 90mm Dia
Stock Ref; ND-14019-39



Apex Vibration Conveyor 200mm Dia
Stock Ref; N9106-39



S/S Tubular Conveyor 200mm Dia
Stock Ref; ND-13653-39





Driers



0.3 Sq.M Nirol Continuous S/S Fluid Bed Drier
Stock Ref; [ND-12200-13](#)



APV Mitchell Halar Lined 5 Tray Vacuum Oven
Stock Ref; [N8126-13](#)



Apex S/S Double Cone Drier 40L
Stock Ref; [S7441-13](#)



9,000L Hedinair M/S Electrically Heated Oven
Stock Ref; [ND-13868-13](#)



6,000L Buss S/S Paddle Vacuum Drier
Stock Ref; [N7395-13](#)



4,000L S/S Jktd Vacuum Conical Mixer
Stock Ref; [N10765-13](#)

Dust Collectors



DCE Unimaster UMA756 K18
Stock Ref; [ND-13368-40](#)



Unimaster UMA253G3
Stock Ref; [ND-13221-40](#)



Unimaster UMA102G3
Stock Ref; [N10184-40](#)

Fans



40mm Dia M/S Blower Fan
Stock Ref; [ND-12859-29](#)



Axial Flow Port Hole Fan
Stock Ref; [ND-13007-30](#)



Secomak High Velocity
Stock Ref; [N10560-29](#)





Filling/ Packaging Equipment



Comar Automatic Carton/ Box Erector
Stock Ref; [ND-13935-23](#)



AMS S/S Semi-Automatic Auger Filler
Stock Ref; [ND-13810-23](#)



Sessions UK Double Sided Labeller
Stock Ref; [ND-14026-23](#)

Filters



Andritz Polypropylene Filter Press 470mm
Stock Ref; [12235-18](#)



2.3 Sq.M. S/S Pressure Leaf Filter
Stock Ref; [CPL-13974-70](#)



0.25 Sq.M S/S PTFE Jktd Monoplate Filter
Stock Ref; [N10916-18](#)

Food Processing Equipment



80L S/S Jktd Cutter Cooker Vacuum Mixer
Stock Ref; [ND-12796-24](#)



20L Promag Ice Cream Machine
Stock Ref; [ND-13783-24](#)



4 Roll S/S Peanut De-Husker
Stock Ref; [N9511-24](#)



APV Whey Cascade Filter
Stock Ref; [ND-12829-24](#)



S/S Twin Head Depositor
Stock Ref; [ND-11728-24](#)



Inoxpa Cleaning System
Stock Ref; [ND-13870-24](#)





Grinders Dry - Hammer Mills/ Granulators/ Attritors



**30kw M/S Christy Turner
Swing Hammer Mill**
Stock Ref; ND-13770-11



**90kw Christy Norris M/S
Hammer Mill**
Stock Ref; ND-13562-11



**British Rema Opposed
Jet Mill M/S**
Stock Ref; ND-13005-11



**75kw Eldan Rasper M/S
Granulator**
Stock Ref; ND-14058-11



**Double Rotor Hammer
Mill 80 T/Hr**
Stock Ref; N4843-11



**Alfred Herbert No. 6
Attritor**
Stock Ref; N4376-11

Grinders Wet - Attritors/ Bead Mills/ Roll Mills



**200L S/S R&B Jktd Attritor
37kw**
Stock Ref; ND-14122-12



**100L S/S Chamber Jktd
Torrance Attritor**
Stock Ref; ND-13842-12



**50L S/S Torrance Jktd
Attritor**
Stock Ref; ND-12543-12



**60L Eiger Torrance S/S
Horizontal Jktd Bead Mill**
Stock Ref; ND-13213-12



**Buhler S/S Horizontal Jktd
Bead Mill 38kw**
Stock Ref; ND-13378-12



**Buhler M/S Triple Roll
Mill**
Stock Ref; ND-14049-12

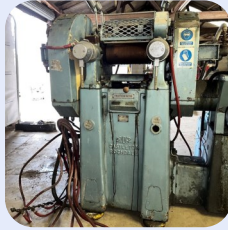




Continued - Grinders Wet



Fryma Koruma M/S Ball Mill
Stock Ref; [ND-12901-12](#)



M/S Twin Roll Mill
Stock Ref; [N10736-12](#)



3,750L Jktd Ball Mill
Stock Ref; [N10066-12](#)

Heat Exchangers



55 Sq Alfa Laval Plate Heat Exchanger
Stock Ref; [S8997-19](#)



35 Sq Plate Pasteuriser Heat Exchanger
Stock Ref; [ND-12825-19](#)



1.4 Sq Shell & Tube Heat Exchanger
Stock Ref; [N9318-19](#)

Mixers Dry - Ribbon Blenders/ Conical Mixers/ Plough Shear Mixers



4,300L M/S U-Trough Mixer 22kw
Stock Ref; [ND-12120-10](#)



4,000L S/S Hosokawa Micron Conical Mixer
Stock Ref; [ND-13914-10](#)



1,300L S/S Lodge Plough Shear Mixer
Stock Ref; [ND-13743-10](#)



1,800L S/S Iozzelli Twin U-Trough Mixer
Stock Ref; [ND-13767-10](#)



1,000L S/S Conical Nauta Type Mixer
Stock Ref; [ND-14054-10](#)



2,000L S/S Tee Blade Plough Shear Mixer
Stock Ref; [ND-13269-10](#)





Grinders Dry - Ribbon Blenders/ Plough Shear Mixers



1,000L S/S Polar U-Trough Mixer
Stock Ref; ND-13770-11



1,000L S/S Jktd Lodige Plough Shear Mixer
Stock Ref; ND-14068-10



1,000L S/S Winkworth U-Trough Mixer
Stock Ref; ND-14181-10



500L S/S Winkworth U-Trough Mixer
Stock Ref; N9941-10



200L S/S Gardner U-Trough Mixer
Stock Ref; ND-13741-10



240L S/S Jktd Winkworth U-Trough Mixer
Stock Ref; ND-13476-10

Mixers Paste



1,000L Drais Vacuum Planetary Mixer
Stock Ref; N10241-09



600L Rayneri Vacuum Planetary Mixer
Stock Ref; N10420-09



500L Unitron Scraped Tilting Cooker Mixer
Stock Ref; N6955-01



500L Iozzelli Twin Paddle Mixer Extruder
Stock Ref; N9201-09



450L S/S Winkworth Jktd Z Blade Mixer
Stock Ref; N8030-09



200L Unitron Scraped Tilting Cooker Mixer
Stock Ref; S9773-01





Mixers Paste



250L S/S Jktd High Shear Mixer Granulator
Stock Ref; ND-13352-09



200L S/S Jktd Baker Perkins Z Blade Mixer
Stock Ref; 11407



100L S/S Hobart Spiral Mixer
Stock Ref; ND-13384-09



80L Hobart M802 Planetary Mixer
Stock Ref; ND-13825-09



30L S/S Molteni Jktd Planetary Mixer
Stock Ref; ND-13526-09



10L S/S Mixtruder Jktd Z-Blade Mixer 2.2kw
Stock Ref; RBP-15-09

Liquid Pumps



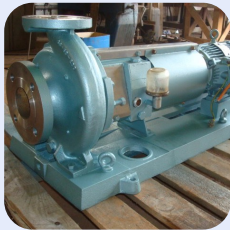
2,500 LPM M/S Flowserve 125-100Cpxm
Stock Ref; N9933-32



1,650 LPM W. Simpson Type 65CP250
Stock Ref; ND-13914-10



980 LPM APV Centrifugal Pump
Stock Ref; ND-12626-33



500 LPM S/S Sterling Labour PC80-50-200
Stock Ref; N10343-33



80 LPM S/S Mono Pump Type SS052/MS1RS
Stock Ref; N10727-34



25 LPM SSP S/S Lobe Pump
Stock Ref; ND-13852-34





Reaction Vessels



45,000L S/S Limpet Coiled Reactor
Stock Ref; N7088-01



20,000L S/S Fermentation Mixing Vessel
Stock Ref; N10751-07



900L S/S Jktd Reactor Shearhead Mixer
Stock Ref; N7201-01



520L S/S Limpet Coiled Reactor Flameproof
Stock Ref; N8480-01



130L Mammalian Cell Fermenter
Stock Ref; ND-12889-01



50L GLS Pfaudler Reactor
Stock Ref; ND-12578-01

Sieves



Allgier Three Deck Sieve M/S 1,800mm Dia
Stock Ref; ND-13759-16



600L Rayneri Vacuum Planetary Mixer
Stock Ref; N10420-09



KEK Rotary S/S Sifter Type K406
Stock Ref; ND-11919-16



570mm S/S New Single Deck Sieve
Stock Ref; RC1263A-16



510mm Dia Russell Compact S/S Sieve
Stock Ref; ND-12480-16



250mm Dia Le Coq S/S Rotary Sieve
Stock Ref; ND-13838-16





Heated Tanks/ Pressure Vessels/ Mixing Tanks



20,000L S/S Vertical Tank
Stock Ref; [N10393-07](#)



2,200L S/S Open Top Tank
Stock Ref; [ND-13552-07](#)



1,000L S/S Vertical Enclosed Tank
Stock Ref; [ND-11636-07](#)



1,000L S/S Enclosed Mixing Tank
Stock Ref; [N9434-07](#)



5,500L S/S Jktd Enclosed Mixer
Stock Ref; [N10522-04](#)



2,200L S/S Jktd Enclosed Mixing Tank
Stock Ref; [N10943-04](#)



2,100L S/S Jktd Mixing Tank
Stock Ref; [N9064-01](#)



900L Giusti S/S Jktd Portable Pan
Stock Ref; [ND-13554-04](#)



45,000L S/S 1/2 Coil Pressure Vessel
Stock Ref; [N7088-05](#)



7,800L S/S Horizontal Pressure Tank
Stock Ref; [N8869-05](#)



650L S/S Euro-Vent Pressure Vessel
Stock Ref; [ND-13964-05](#)



240L S/S Jktd Vertical Pressure Vessels
Stock Ref; [ND-13166-05](#)



25,000L S/S 1/2 Coil Enclosed Mixer
Stock Ref; [N10435-01](#)



16,000L M/S Rubber Lined Mixing Vessel
Stock Ref; [N110343-33](#)



5,000L S/S Halar Lined Mixing Vessel
Stock Ref; [ND-13418-02](#)



1,100L S/S Electrically Heated Jktd Mixer
Stock Ref; [ND-14092-01](#)





Our Refurbishment Capabilities



Rigal Bennett



Full Refurbishment Of 100L S/S Gardner U-Trough Mixer



Stage 1 - Cleaning

Mixer stripped down and all parts separated for rigorous cleaning inside and out.



Stage 2 - The Rebuild

- ⇒ Main body sand blasted and powder coated to provide an immaculate finish.
- ⇒ New motor, bearings and seals fitted to ensure the mixer performs to the highest standard whilst increasing its life expectancy and reducing future maintenance costs.
- ⇒ New lid designed and fabricated on site to suit the clients specific working requirements.
- ⇒ New wheels fitted, making the mixer portable.



Stage 3 - Ready for Production

The mixer was finally fully tested to ensure its return to production for hopefully many years to come! Saving our client up to 70% expenses compared to purchasing new, with no compromise on quality.

